



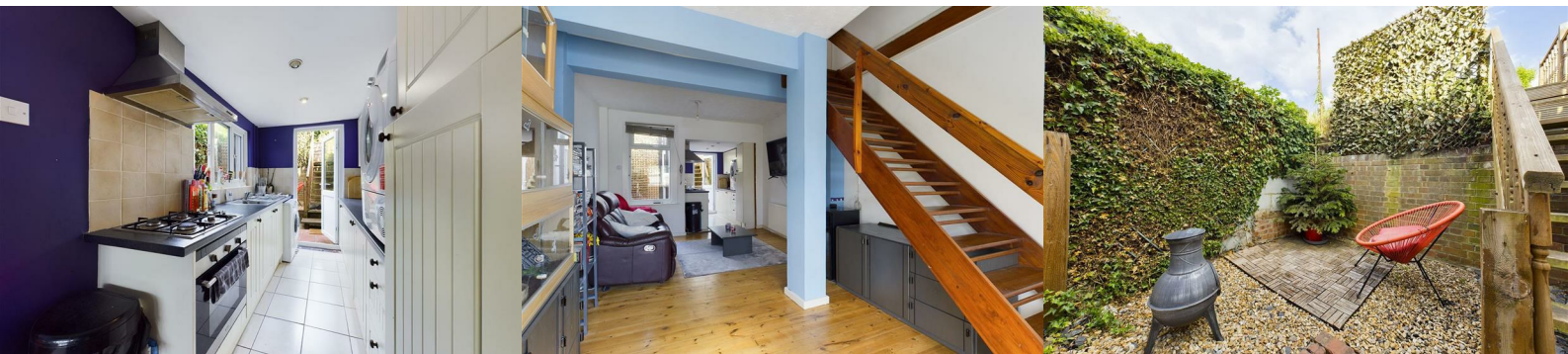
2 Ivy Place Nashenden Lane

, Rochester, ME1 3JH

Guide Price £230,000



CHAIN FREE. GUIDE PRICE £230,000-£250,000. OPEN DAY 23RD JULY CALL TO BOOK YOUR SLOT. Tucked away off the main road in private location in Borstal is this 2 bedroom period terrace property, surrounded by 2 small rows of other terrace houses. The home in the past has been altered internally to make better use of the space and now consists of a large open plan lounge/diner with a fitted kitchen on the ground floor. Upstairs has also previously undergone alterations and now offers 2 bedrooms and a separate shower room of a good size. As you enter the rear garden there is a patio area on the same level with steps leading to the upper decked level. The upper decked level boundary along with the neighbouring properties have been moved back over the years, your solicitor will advise you on this. From the main bedroom at the front there are lovely views over the river and beyond. This would make an ideal first step onto the housing market or rental investment. Council tax band B. EPC rating D.



- lounge/diner
- kitchen
- stairs/landing
- bedroom 1
- bedroom 2
- shower room
- garden

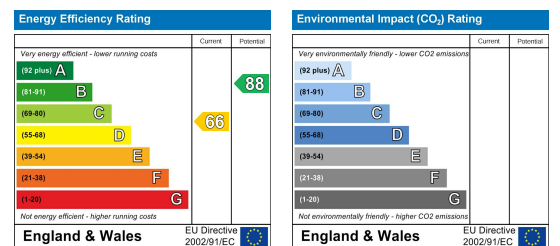
Area Map



Floor Plans



Energy Efficiency Graph



These particulars, whilst believed to be accurate are set out as a general outline only for guidance and do not constitute any part of an offer or contract. Intending purchasers should not rely on them as statements of representation of fact, but must satisfy themselves by inspection or otherwise as to their accuracy. No person in this firm's employment has the authority to make or give any representation or warranty in respect of the property.